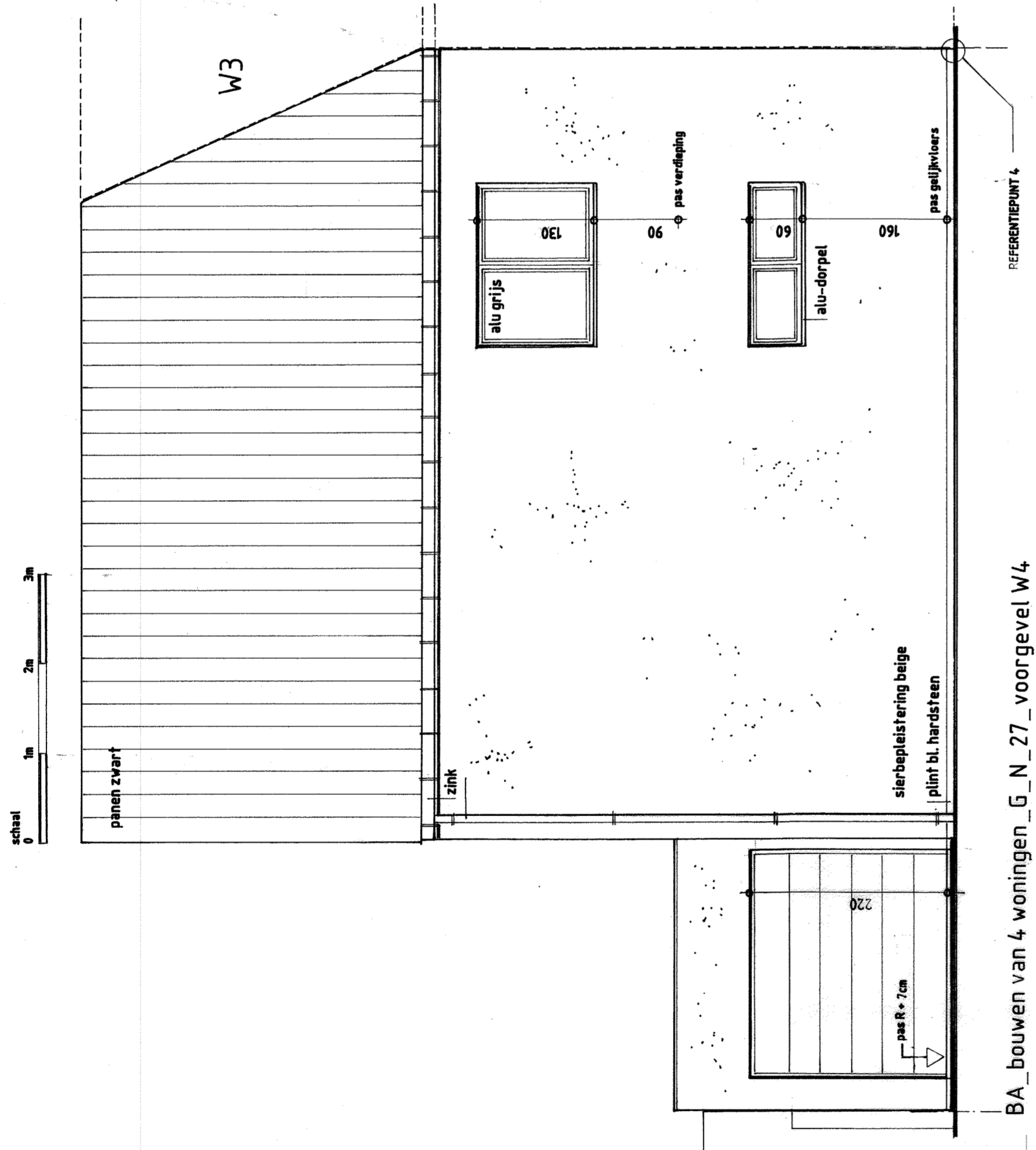
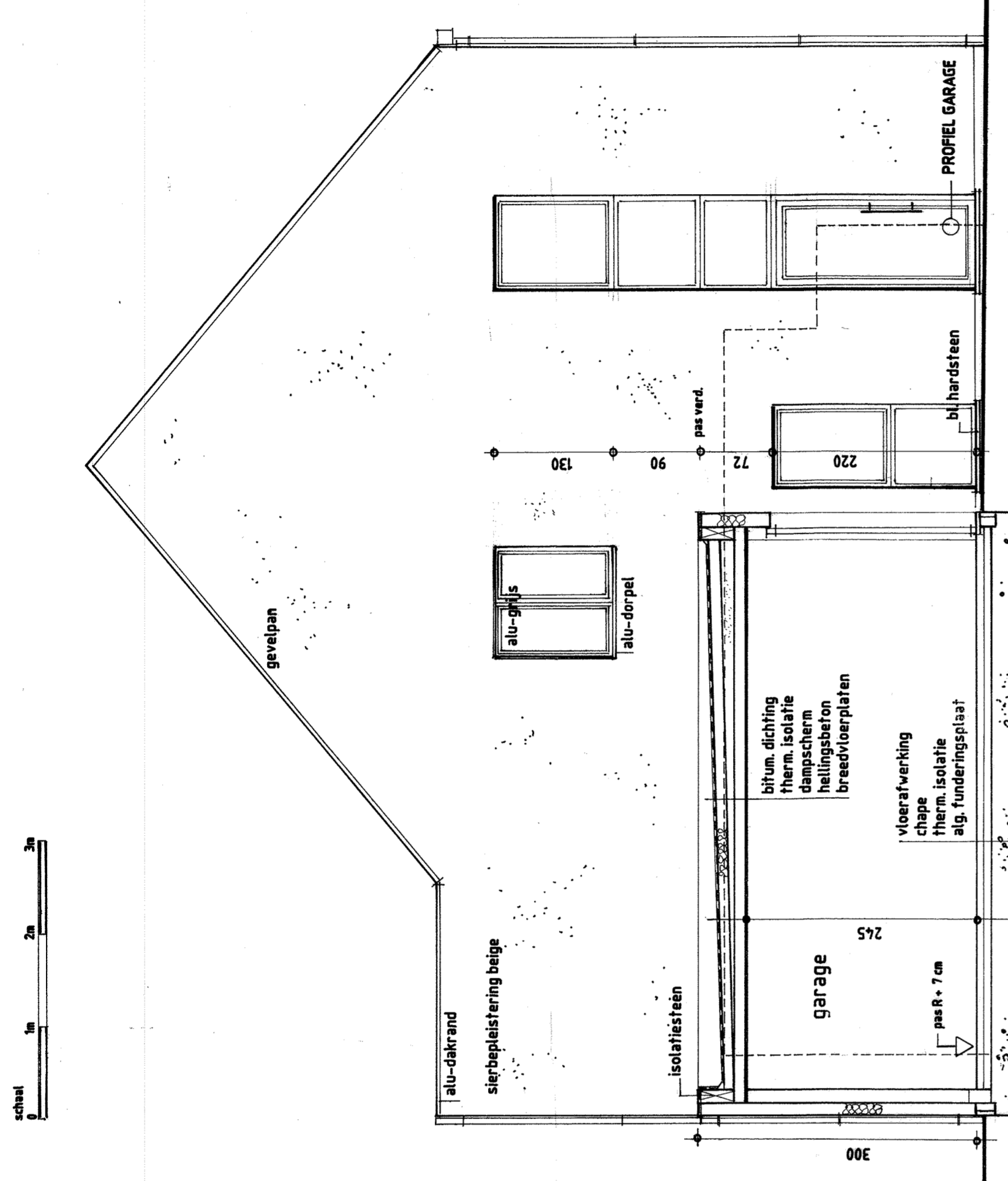


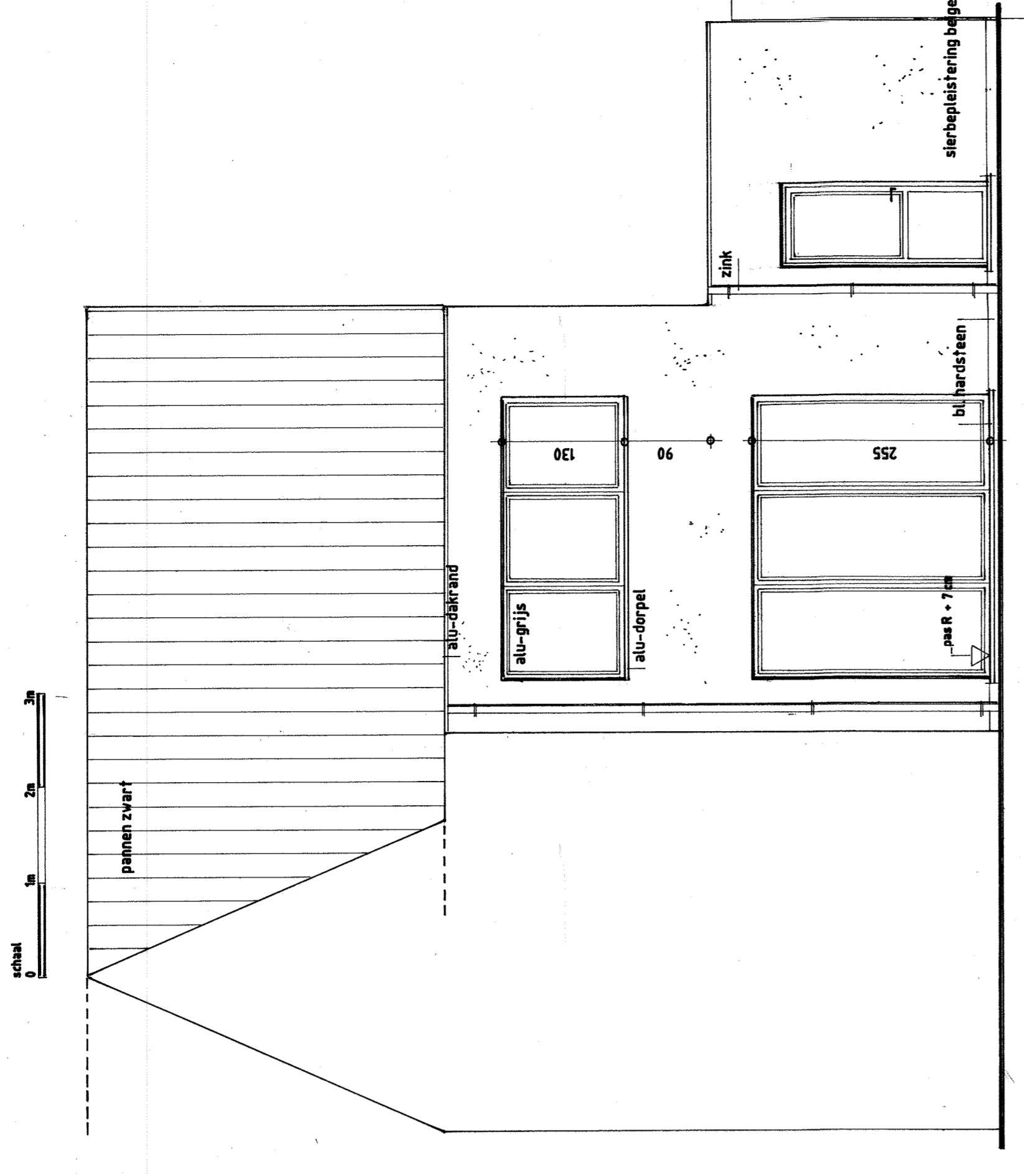
BA\_bouwen van 4 woningen\_P\_N\_26\_fundering W4



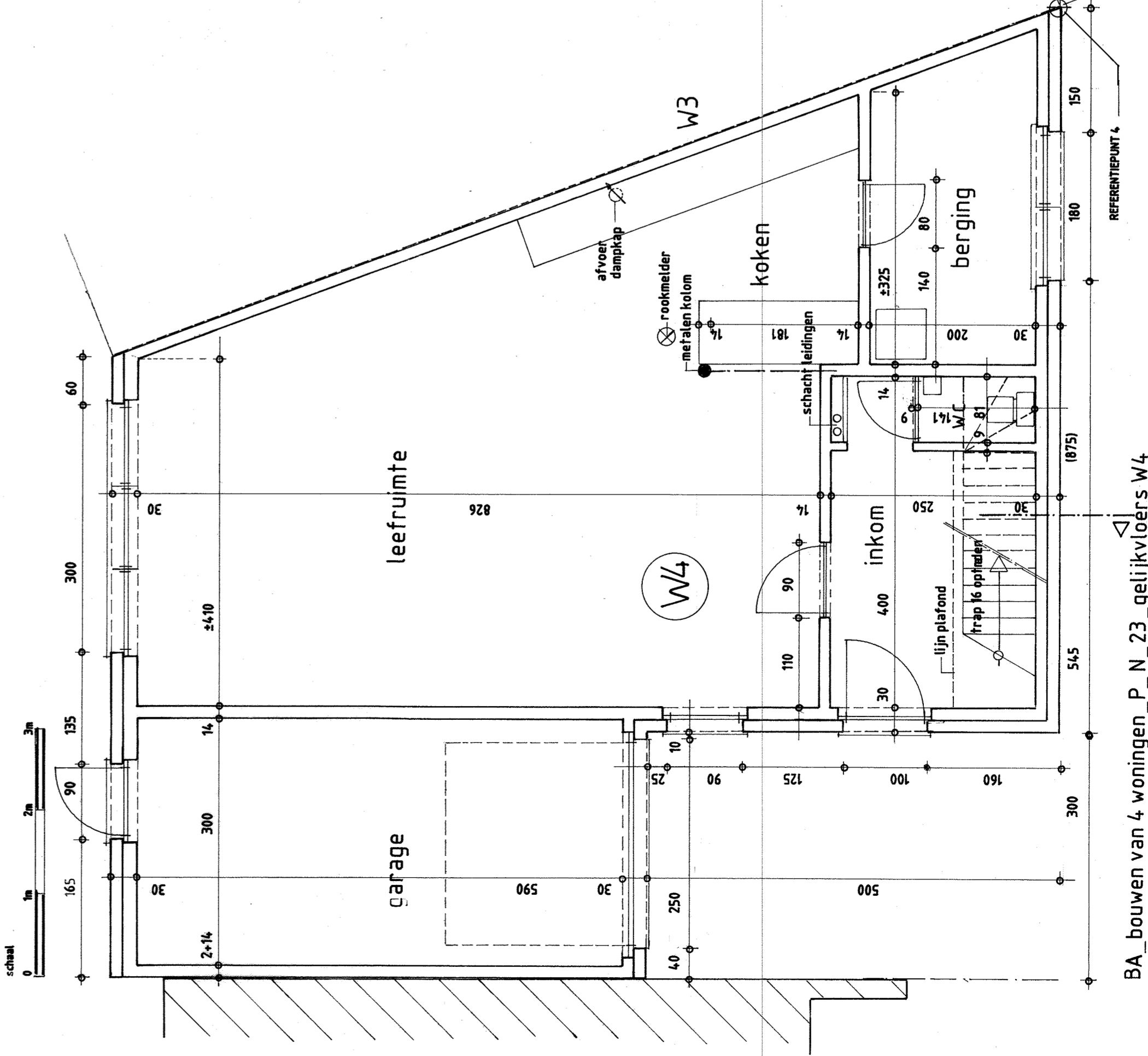
BA\_bouwen van 4 woningen\_G\_N\_27\_voorgevel W4



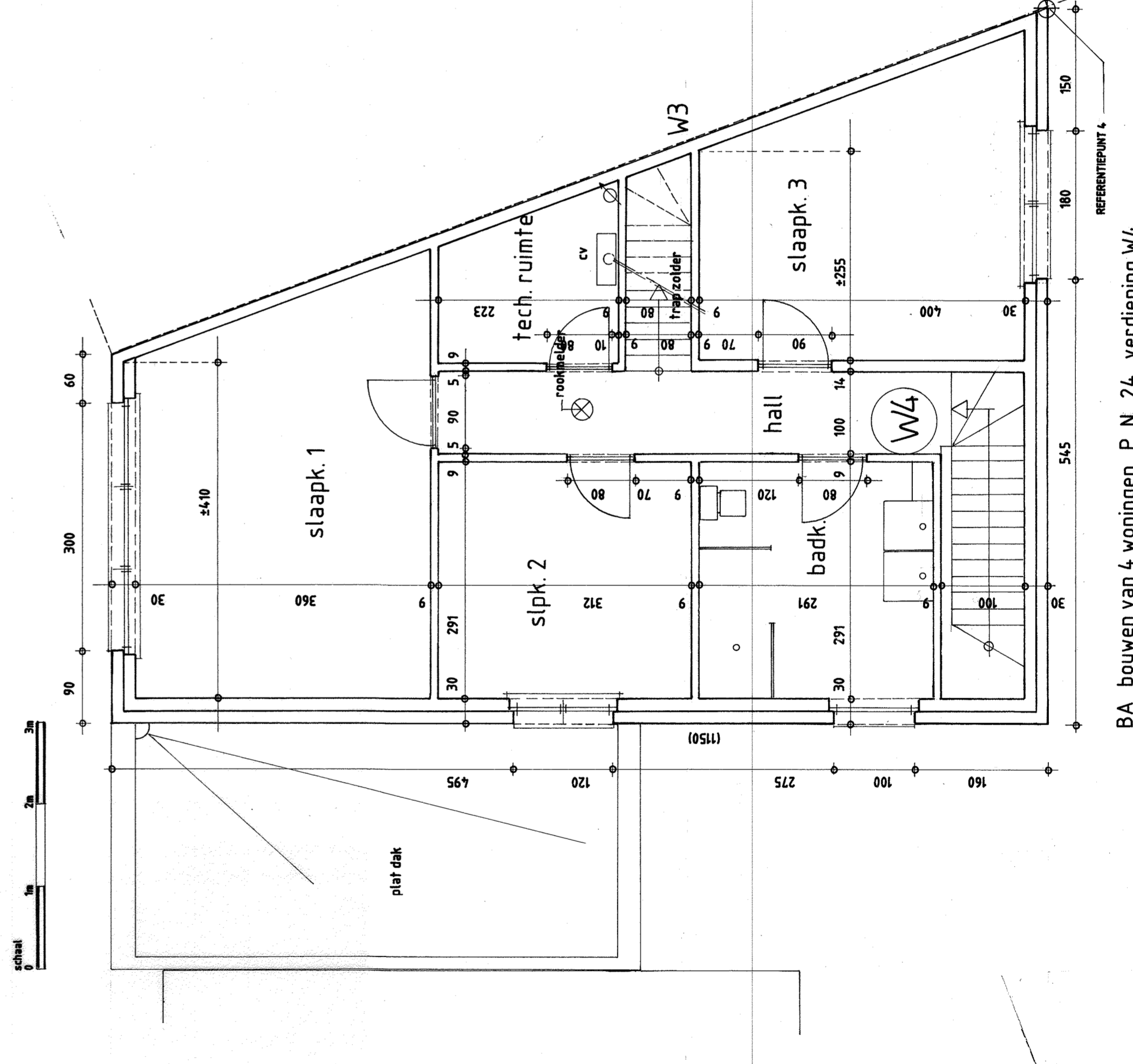
BA\_bouwen van 4 woningen\_G\_N\_29\_zijgevel links W4



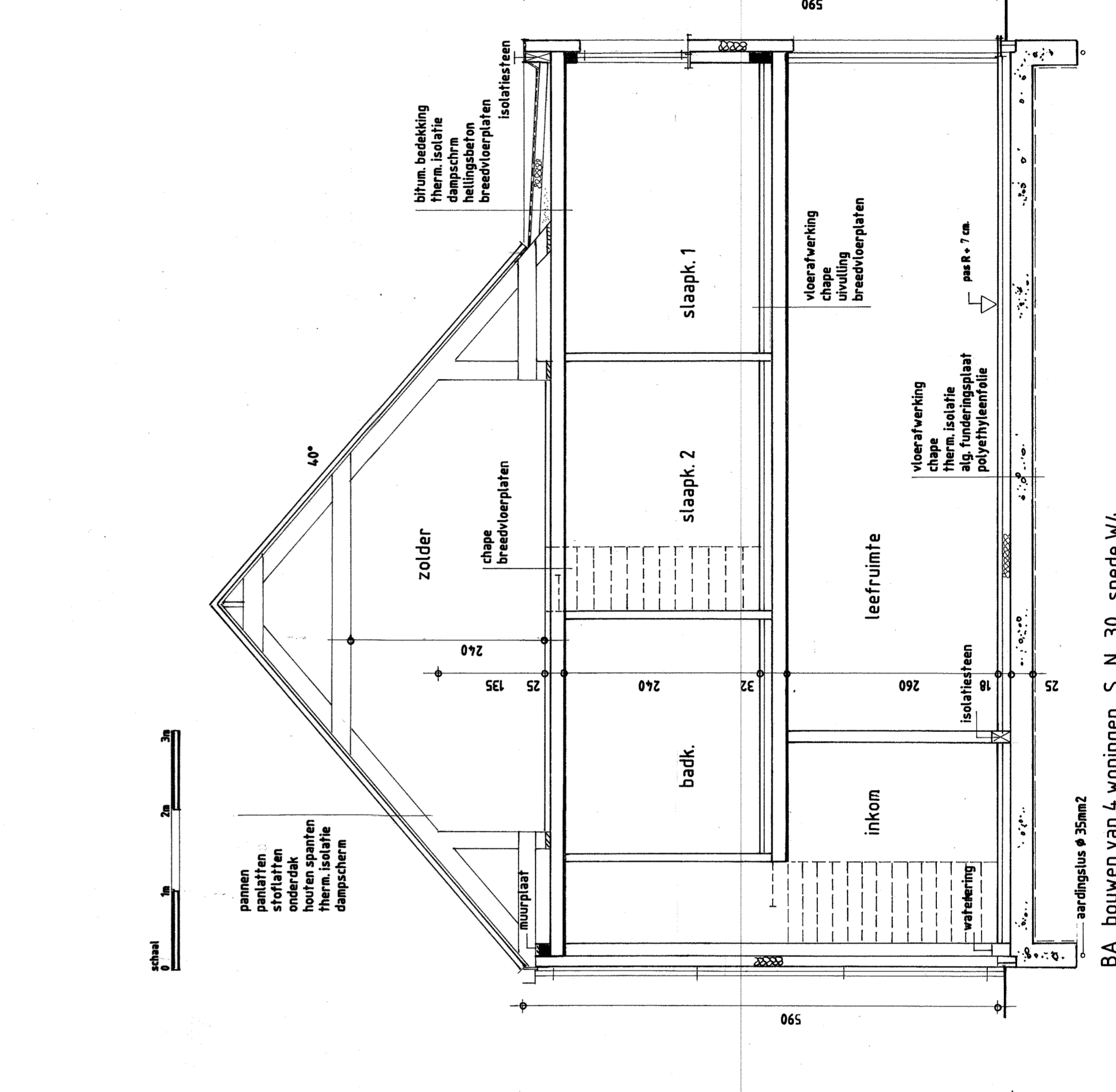
BA\_bouwen van 4 woningen\_G\_N\_28\_achtergevel W4



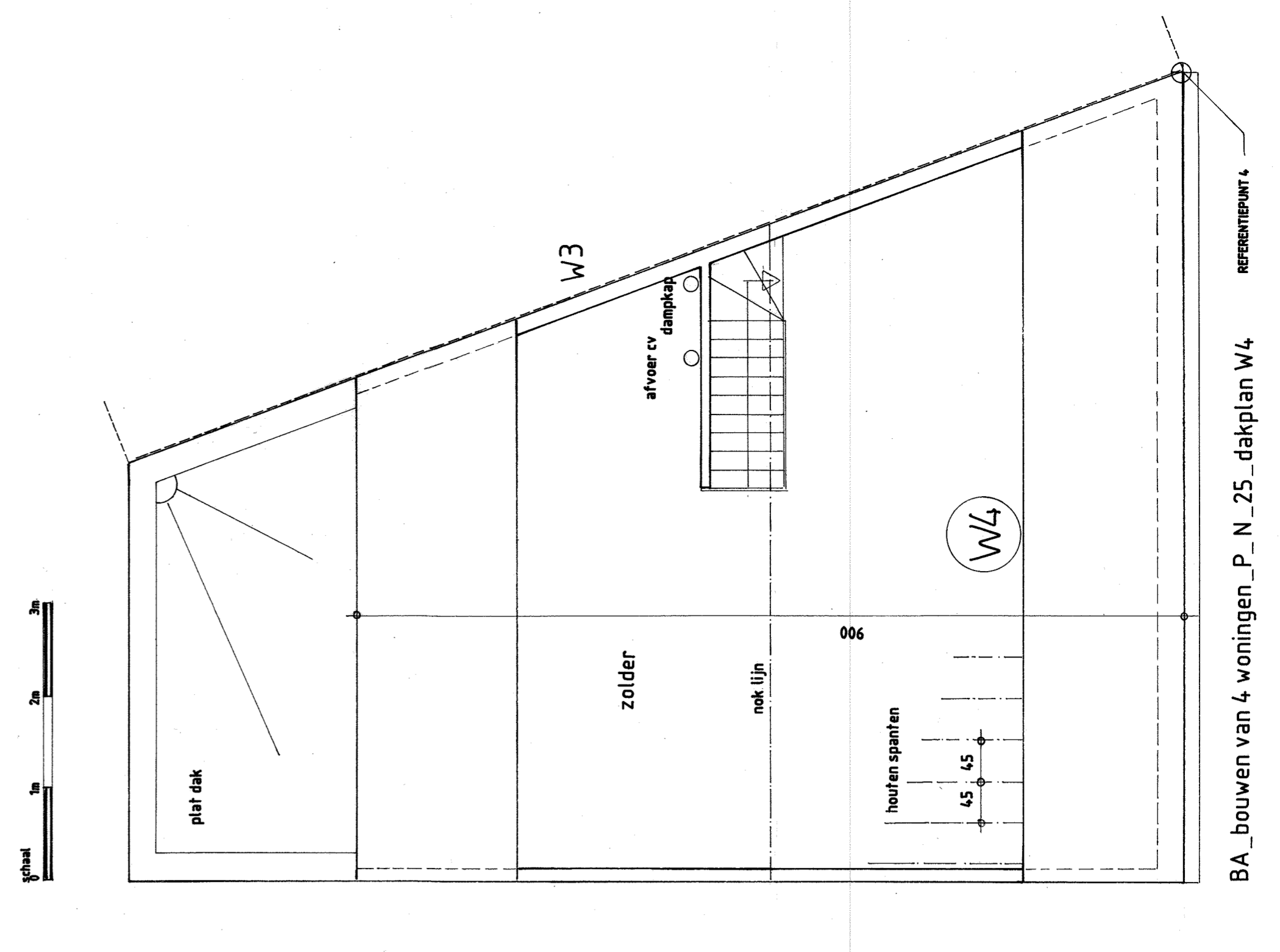
BA\_bouwen van 4 woningen\_P\_N\_23\_geleijkvloers W4



BA\_bouwen van 4 woningen\_P\_N\_24\_1e verdieping W4



BA\_bouwen van 4 woningen\_S\_N\_30\_2e verdieping W4



BA\_bouwen van 4 woningen\_P\_N\_25\_dakplaat W4